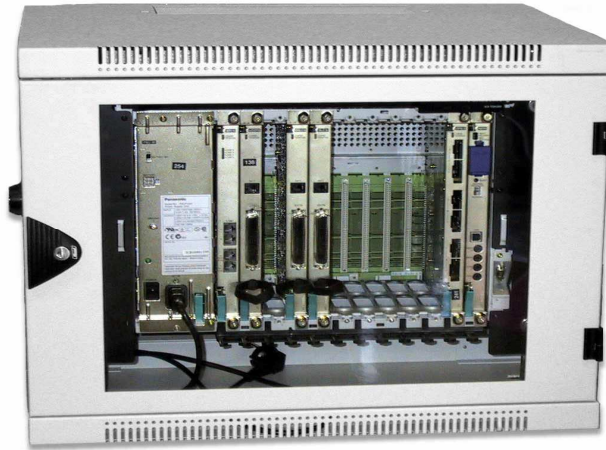


UPAT-200

TELEPHONE EXCHANGE CENTRAL UNIT

Marine type Telephone Exchange (PBX) central unit in 19" wall mount rack (9RU), with Panasonic hybrid IP PBX switching technology. System supports standard analogue single line telephones (SLT), and Panasonic digital proprietary telephones (DPT). Up to 128 extension ports. Programmable features.



FEATURES

- Class of Service (64 COS)
- Default program
- Direct Inward dialling (DID)
- Extension Lock
- Flexible numbering plan (4-digits)
- Hunt groups
- Online diagnostics
- Operator functions
- Paging groups
- PC programming
- PC console
- Pick up groups
- Quick setup and default data plan
- Remote maintenance
- Ring groups
- Speed dialing
- Station Message Detailed Recording
- Toll restriction
- Trunk group (64)

EXTENSION FEATURES

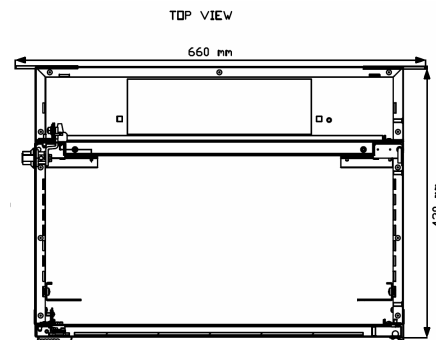
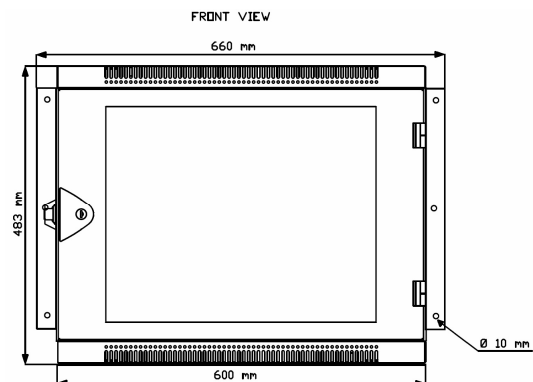
- Call forwarding
- Call hold
- Call pick up
- Call transfer
- Conference
- Busy override
- Message waiting
- Wake up call

OPTIONAL FOR CENTRAL UNIT

- Voicemail system

SPECIFICATIONS

Mains power	100-240 V AC 50/60 Hz
Colour	Light Grey, tinted red door glass
Power consumption	Average 295W
Back-up Power	36V battery (charger included)
Dimensions	483 x 600 x 420 mm (HWD)
Weight	Approx 30-35 kg
Approvals / Compliance	CE, UL, CSA, FCC



General

- Built-in cooling fan.
- Self diagnostic error / alarm system.
- Music On Hold (MOH) inputs
- USB and COM (RS 232) ports
- SMDR output for printer log detail recording
- Individual card status LED indicators and Alarm and run status LED indicators.
- Wall mounted rack with swing body for easy access to ship cable network in the rear part.
- Spring force (anti vibration) terminals for ship's cables 2.5mm²
- Front door with tinted tempered glass with handle and key lock
- Switching: Non blocking distributed time switch
- Dialing: DTMF (Tone) / DP (Dial pulse)
- Ring frequency: 20/25 Hz (selectable)

Standard insert cards and modules

- Analogue extension cards (8 or 16 ports) for single line telephones (SLT)
- Analogue 2-wire trunk line cards (8 or 16 ports)
- Digital extension cards (8 or 16 port) for digital proprietary telephones
- Digital hybrid cards (8 port) for digital and analogue telephones
- Cell station interface card for DECT wireless system (4 or 8 cells)
- Basic rate euro ISDN card (4 or 8 ports)
- Primary rate Euro ISDN card (30 B channels)
- Primary rate NI (North American) ISDN card (23 B channels)
- T1, E1 and E&M trunk cards
- Door phone cards with door openers
- 4-channel message card
- Remote card for remote communication and maintenance
- Ethernet card CTI link
- Voice over IP (VoIP) card
- Small, Medium and large Power Supply modules.

System Capacity

- Max. extension ports: 128
- Max. single line telephones: 128
- Max. digital telephones (DPT type 1): 64
- Max. digital telephones (DPT type 2): 128
- Max. analogue trunk ports: 128
- Max. basic rate ISDN ports: 64
- Max. primary rate ISDN ports: 4
- Max. DECT base stations: 32
- Max. DECT portable phones: 32
- Max. trunk / extension cards: 10
- Typical max configuration : 128 Single line telephones(SLT)and 32 analogue trunk lines