

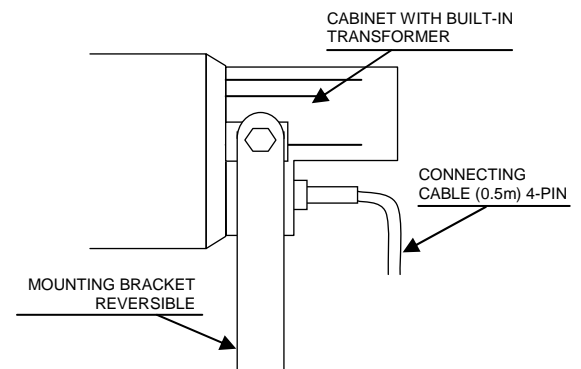
Horn speakers with a very stable and attractive design. They are easy to mount and have a fully tiltable brackets. The pleasant colours blend in very well with the surroundings.


**UDH-135F**

**UDH-120R**

**UDH-015F**
**FEATURES**

- Easy installation, tiltable bracket, tapping made by clapping appropriate cables, either 1/1, 1/2, 1/4 of rated power
- Delivered with water-proof, 4-pole connection cable (flexible hose line)
- All speakers have high protection level: IP-66
- Impact and scratch resistant chassis
- The horn speaker based system are designed for outstanding sound pressure. It can be different for particular models and depends from adjustments
- Available in all RAL colors (Optional)


**SPECIFICATIONS**

	UDH-135F	UDH-120R	UDH-015F
Load rating	35 W	20 W	15 W
Impedance	100 V / 16 Ω	100 V / 8 Ω	100 V / 8 Ω
Transformer tapplings	35 / 17.5 / 10 W	20 / 10 / 5 W	15 / 10 / 5 W
Frequency range	180 - 8000 Hz	250 – 8000 Hz	350 – 6000 Hz
Sound pressure at 1W / 1m	108 dB	107 dB	105 dB
SPL Pmax/1m	125 dB	121 dB	115 dB
IP rating	IP-66	IP-66	IP-66
Dimensions (H x W x L)	220 x 400 x 408 mm	210 x 210 x 280 mm	135 x 120 x 190 mm
Weight	Approx. 3.7 kg	Approx. 1.6 kg	Approx. 1.2 kg
Colour	Grey	Grey	White
Material	Plastic	Plastic	Plastic
Approvals/ Compliance	CE	CE	CE