

MC-005 / 006 / 007 / 008

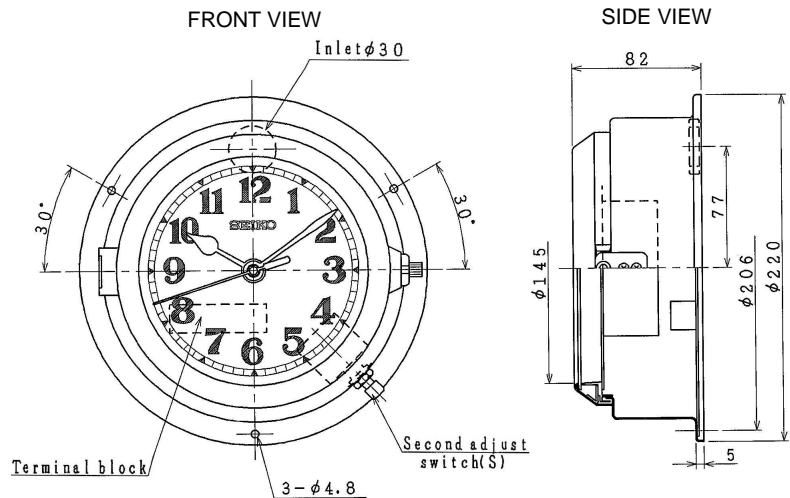
30 Second slave clock with second hand

MC-005 and MC-006 are wall mounting type slave clocks. MC-006 has a pale green dial and an orange backlight - EL.

MC-007 and MC-008 are panel mounting type slave clocks. MC-008 has a pale green dial and an orange backlight - EL.

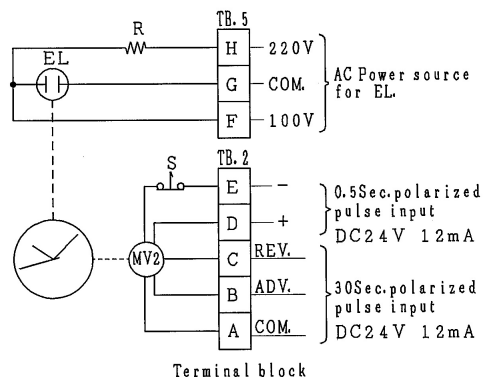


MC-006

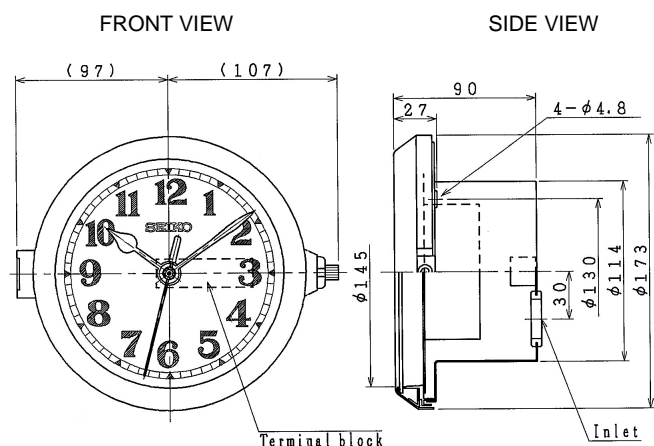


SPECIFICATIONS	
Dimensions (Diameter ϕ , Dial ϕ):	220, 145 mm
Frame material:	Steel
Colour:	Pale green (2.5G7/2) Bluish green (7.5BG7/2)
Hand driving:	Second hand 0.5 second step Minute hand 30 second step

WIRING DIAGRAM WITH EL



MC-007



SPECIFICATIONS	
Dimensions (Diameter ϕ , Dial ϕ):	173, 145 mm
Frame material:	Steel
Colour:	Chrome-plated
Hand driving:	Second hand 0.5 second step Minute hand 30 second step

WIRING DIAGRAM

